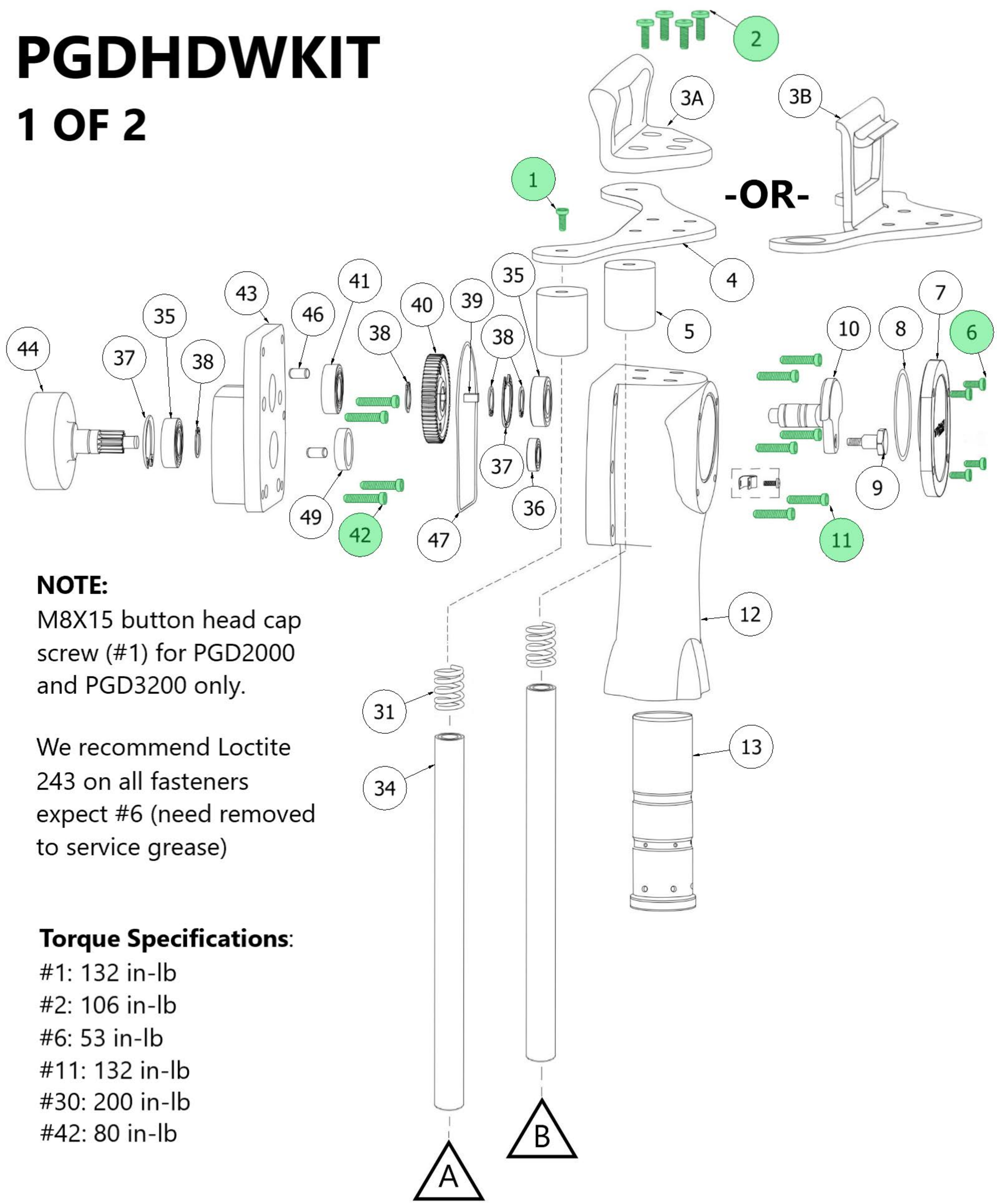


# PGDHDWKIT

## 1 OF 2



### NOTE:

M8X15 button head cap screw (#1) for PGD2000 and PGD3200 only.

We recommend Loctite 243 on all fasteners expect #6 (need removed to service grease)

### Torque Specifications:

- #1: 132 in-lb
- #2: 106 in-lb
- #6: 53 in-lb
- #11: 132 in-lb
- #30: 200 in-lb
- #42: 80 in-lb



